



DISTINCTIVE
DAYLIGHTING

TIME-TESTED CEMCEL™
TECHNOLOGY | UTILIZING STATE OF
THE ART MATERIALS



A California Original-Manufactured in the Golden State since 1960

MUSEUM-QUALITY NATURAL DAYLIGHT

Diffused sunlight is easy on the eyes without creating shadows, hot spots or glare.

LASTING MAINTENANCE-FREE TIDY APPEARANCE

Virtually self-cleaning, the edges are ridge free without areas for dirt to collect.

COST EFFECTIVE

An economical means to energy conserving light control.

ENVIRONMENTALLY FRIENDLY

UV cured, producing minimal emissions and manufactured locally. Both factors work together to reduce the carbon footprint of your project.

LIGHT WEIGHT AND TREMENDOUS STRENGTH

A standard panel will resist at least 100ft lbs of impact before breakthrough, yet weighs only 2 1/2 lbs per square foot. Minimal structural support is required and installation is fast and easy.

AN EXCEPTIONAL INVENTION

Tested in the real world on rooftops. The monolithic, all fiberglass, completely moisture proof, non-conductive insulating construction of Distinctive's Cemcel panel continues to prove itself year after year.

VERSATILE

Single curb mounted units up to 6' x 25'. Larger units are connected by our aluminum batten system.



THE EMBASSY SUITES HOTEL //
Marin Civic Center, San Rafael, CA

The building was designed with one 30' x 80' skylight over the atrium, a 20' x 60' skylight over the restaurant, and two additional 10' x 30' units.
Ashton Pacific Design, Oakland, CA

Panel Make-Up

Our unique panel fabrication method eliminates the use of aluminum and adhesives, achieving lamination by embedding a fiberglass grid core in the wet resin. This results in a mechanical and chemical bond...a lasting bond supported by a fifteen-year warranty against delamination. UV protective 10.0 mil gelcoat weather surface ensures durability for the life of the building with excellent color stability.

Why Distinctive's Cemcel?

Our stressed skin panel and bi-axial design gives strength to the panel in both directions. A 2¾" thick Cemcel insulating panel resists at least 100 ft.-lbs. of impact before breakthrough, yet weighs only 2.5 lbs./sq. ft. - the same or less than a typical roof system. Because of their light weight, minimal supporting structure is required, and installation is simple, fast, and easy. The 10 mil Gelcoat 40 weather surface provides unsurpassed protection from the elements.

Lays Flat With No Surface Distortion or Waviness

Because of the standard Cemcel 6" x 9" grid pattern and .070" skin thickness, the panels stay flat without "oil canning", a condition which can occur when a relatively thin sheet is used to span larger distances.

Design Alternatives

Cemcel panels are available in sizes up to 6 feet wide and 25 feet long, permitting structural supports at 6 foot intervals. Our 1", 1½", 2¾" and 3½" thick panels are available to accommodate specific structural, lighting, and decorative designs. Adaptable to many geometric shapes, including flat oval or round, pitched, pyramid, vault, and dome, In multi panel systems, the weather tight batten system provides a waterproof assembly of panels and framing to meet the most demanding and imaginative design requirements.

Insulating translucent insulation placed in the core cells provides a choice of U-values and shading coefficients depending upon your project's energy conservation requirements. The non-conductive, non-metallic core eliminates condensation.

Guarantee

Distinctive Daylighting guarantees for a period of five years all materials and workmanship in our product, when installed in accordance with Distinctive's recommendations. We further guarantee that the panels will not delaminate for a period of fifteen years. For full warranty info contact Distinctive Daylighting.

"The quality of light entering the spaces of my buildings has always been a primary concern. From restaurants to residences, offices to cafes, chapels and art studios. I specify Distinctive Daylighting at every opportunity. Their skylights and panels breathe life into my architecture."

- Mark Primack, Mark Primack Architects, Santa Cruz, CA



LIVE LOAD STRONG AND SAFE
FOR FALL PROTECTION

KAILUA TOWN CENTER //
Oahu, Hawaii

The public is protected from rain and sun in a well lit atmosphere.
MC Architects, Honolulu, HI



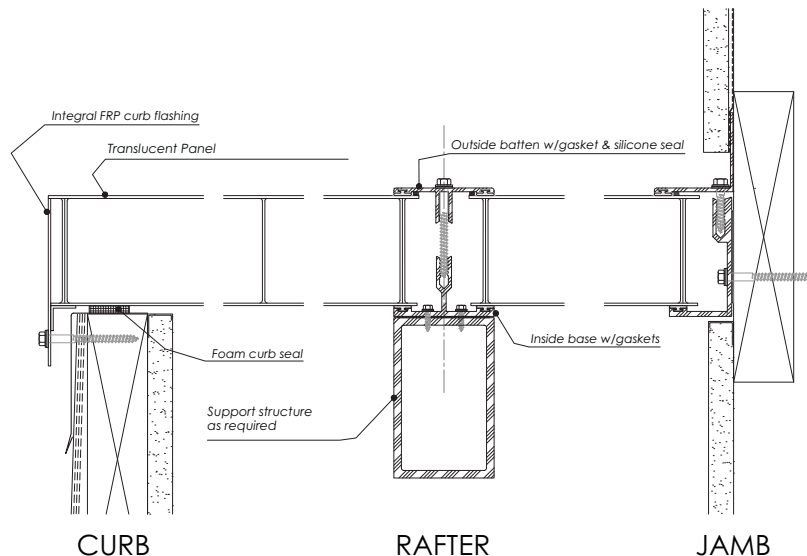


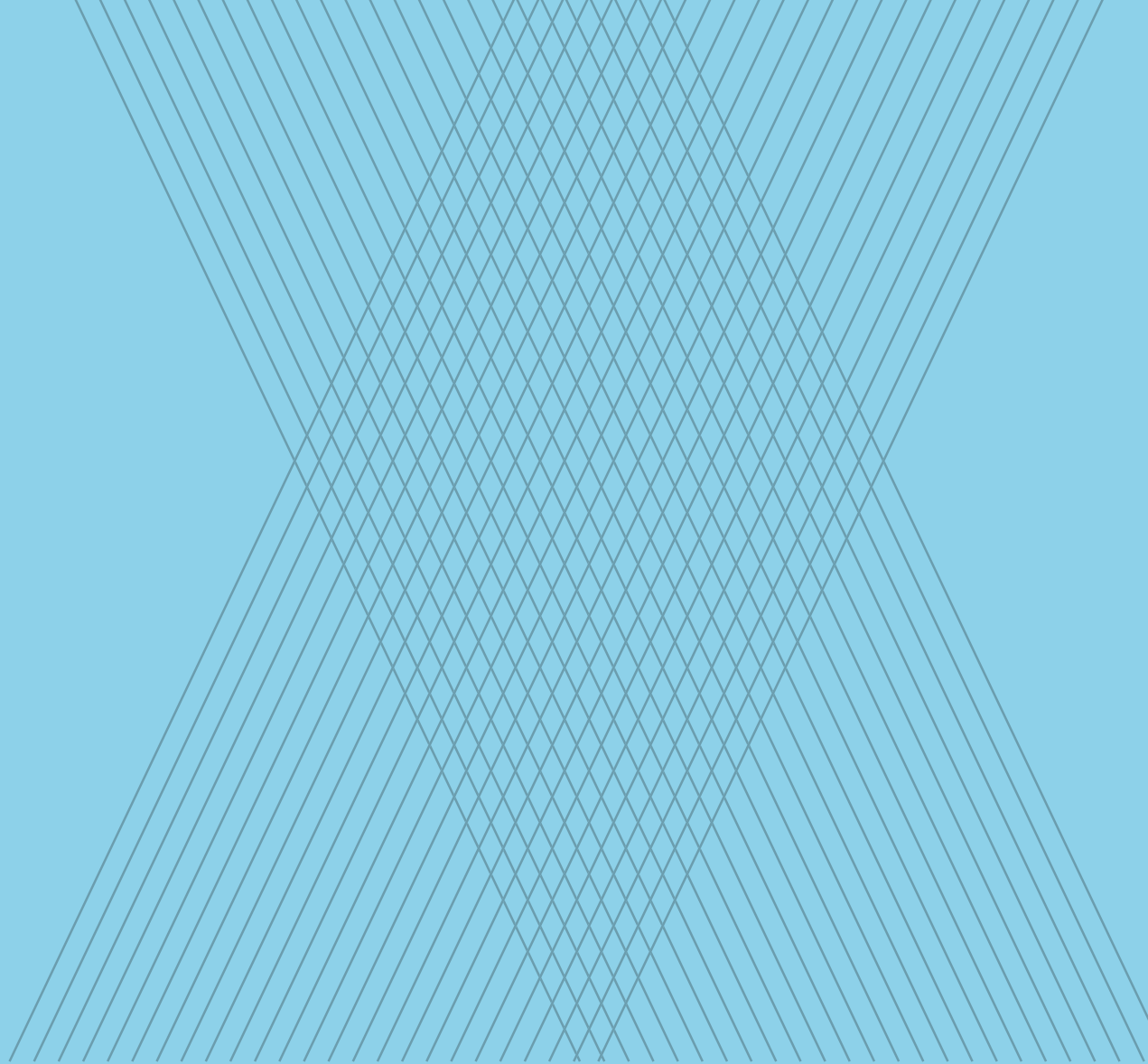
**SPCA CENTER FOR COMPASSION
ADOPTION AND EDUCATION CENTER //**
Burlingame, CA

Below this 25' x 25' bi-parting unit is the main gathering area where people interested in adopting animals get acquainted.
Swatt Miers Architects, Emeryville, CA

FRP Cemcel Panels

Our services include design and engineering. We also provide expert installation and service as well as shipping and/or delivery. The drawing below is a typical section view of the basic Cemcel system.





Let's Talk.

Our time-tested products have been specified for shopping malls, plazas, indoor pools, bus stops, churches, homes, and numerous other types of structures.

If you have any interest in our products and services, please call us at: **415-637-4586** or email Mitch Roberts at **mitch@distinctivedaylighting.com**.



Museum-Quality Natural Daylight Since 1960



165 Valley Drive
Brisbane, California
94005

For more information on our Cemcel panels
visit us at distinctivedaylighting.com
or call us at 415-637-4586